

Checkpoint®

RF Labels Solutions





Grocery
& Food

Cosmetics

Pharmacy

Eyewear,
jewelry &
accessories

General
Merchandise

Apparel
& Footwear

RF LABELS SOLUTIONS

Effective product protection

With one of the widest portfolios of market leading RF EAS labels on the market, you can find the perfect label for your product from Checkpoint. Your products are made to be the best they can be for your customers.

From the physical properties of the product itself through to the packaging. We understand this, which is why we design labels for specific use cases, not just a one-size-fits-all solution.



At Checkpoint, we manage everything in-house - **from R&D and prototyping to manufacturing** - ensuring complete control over the production process.

Customer base spanning **35 countries, 6 continents**

One of the largest RF Labels manufacturer in the world

Wide portfolio, market leading label performance

Leading label innovation for **50+ years**



Grocery
& Food

Cosmetics

Pharmacy

Eyewear,
jewelry &
accessories

General
Merchandise

Apparel
& Footwear

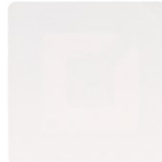
RF LABELS SOLUTIONS

Label **ranges**

ECONOMY



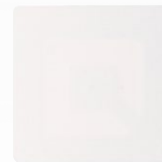
Offers a standard level of Checkpoint quality EAS protection as a basic, lower-cost option. Generally, hand applied, these items are designed for in-store application on general merchandise.



STANDARD



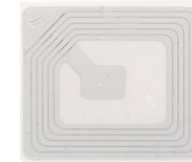
With additional options such as static guarding and larger for automatic application the SP label range fills the gap between the ECON and XP products.



XP



The XP range is our premium offering, delivering our highest performance, quality and consistency across the entire range. Recently reengineered to deliver the performance of our old EP platform with the additional benefits of our in-house development program, the XP label range is now the cornerstone of our RF product offerings.





Grocery
& Food

Cosmetics

Pharmacy

Eyewear,
jewelry &
accessories

General
Merchandise

Apparel
& Footwear

Grocery & Food





Grocery
& Food

Cosmetics

Pharmacy

Eyewear,
jewelry &
accessories

General
Merchandise

Apparel
& Footwear

Grocery & Food

ENSURING FOOD SAFETY: CHECKPOINT'S SUPERIOR PERFORMANCE FOOD LABEL

Checkpoint's purpose designed food label platform ensure that the labels offer superior performance while also being safe for use in food applications. In addition to the rigorous internal testing conducted on these labels, third party laboratories have tested and certified Checkpoint's XP Food Labels for use with food products.

FOOD SAFETY COMPLIANT

Our RF label range for groceries is tested for both food and microwave safety, with ISEGA¹ and TUV certifications safeguarding consumers and retailers alike. Working with food manufacturers and grocery retailers, we adapt our solutions to be integrated in packaging at source as well as hand applied in store.



Grocery
& Food

Cosmetics

Pharmacy

Eyewear,
jewelry &
accessories

General
Merchandise

Apparel
& Footwear

3740 XP

Building on over a decade of experience providing solutions for protecting fresh food products, our 3740 RF food label range delivers superior performance while ensuring safety and compliance with food regulations. Optimized for high speed application and integration the 3740 labels can offer support for Source Tagging programs, deterrent from in store theft and are certified as compliant with packaging recyclability.



Frequency:

8.2 MHz +/- 5%

Dimensions:

37mm x 40mm (1.46" x 1.57")

Face sheet:

Clear PET, Clear PET with Black Lock Print, Yellow PET with Black Lock Print, Yellow Thermal Transfer Paper with Black Lock Print, White Thermal Transfer Paper with barcode Print

BENEFITS

Microwave safe.

Optimized performance.

Smaller footprint to fit more products

Food regulation compliant.

Available with optional Black Lock print.

High and low temperature resistance





Grocery
& Food

Cosmetics

Pharmacy

Eyewear,
jewelry &
accessories

General
Merchandise

Apparel
& Footwear

2410XP

Within the XP range, the 2410RF label stands out for its ability to protect smaller items with a high risk of theft. Despite its small size, it offers exceptional detection, making it ideal for this purpose.



Frequency:

8.2 MHz +/- 5%

Dimensions:

24mm x 25mm (0.94" x 0.98")

Face sheet:

White Premium Grade Paper,
White Premium Grade Paper
with BC Print, White Premium
Grade Paper with customer print,
with Black Lock print, Clear PET,
Clear PET with Black Lock print,
Clear PET with customer print.

BENEFITS

Designed to protect
small items.

A customizable solution
to fit retailer needs.

Tamper-resistant
adhesive.

Can be applied
@Source.

Supports visible tagging
programs





Grocery
& Food

Cosmetics

Pharmacy

Eyewear,
jewelry &
accessories

General
Merchandise

Apparel
& Footwear

2815XP

The 2815 RF is designed for high-theft markets, with a specialized version tailored specifically for footwear. This label seamlessly integrates into the Source Tagging process and offers superior heat tolerance, ensuring optimal performance during rigorous integration.

BENEFITS

Designed for high-speed @Source integration.

Improved on-shelf product availability.

Customizable to fit retailer / brand owner needs.

Discrete protection for improved customer experience.

Footwear-specific version.



Frequency:

8.2 MHz +/- 5%

Dimensions:

49.3mmx26.7mm (1.94"x1.05")

Face sheet:

White Premium Grade Paper,
Premium Grade paper Printed Blue
arrow (specifically for footwear)





Grocery
& Food

Cosmetics

Pharmacy

Eyewear,
jewelry &
accessories

General
Merchandise

Apparel
& Footwear

2928 XP shield tag

Offering supplementary protection for visible EAS labels, Checkpoint's Shield tag combines the RF label with additional overlay, designed to break apart if removal is attempted and frustrate casual thieves and ORC theft alike.

BENEFITS

Extremely difficult for thieves to remove in store or to clean for resale.

Slows down the EAS label removal process by up to 10x.

Improves shrink and sales numbers by increasing OSA.

Both label and overlay can be customized with branding or warning messages.

Suitable for @Source or in store applications.



Frequency:

8.2 MHz +/- 5%

Dimensions:

47mm (1.97")

Face sheet:

Clear PET with Black Lock print





Grocery
& Food

Cosmetics

Pharmacy

Eyewear,
jewelry &
accessories

General
Merchandise

Apparel
& Footwear

2928 XP

The most popular of our Micro labels, the 2928 RF label delivers premium performance for its size plus the additional deterrent used to support our visible tagging programs. Small, round with a customizable transparent top layer the design enables it to adapt to most vertical markets and applications.



Frequency:

8.2 MHz +/- 5%

Dimensions:

Ø 28mm (1.10")

Face sheet:

Clear PET with customer logo,
Clear PET with Black Lock Print,
Clear PET

BENEFITS

Solution for smaller, difficult to protect products.

Discrete protection for improved customer experience.

Supports Visible Tagging programs.

Suitable for in store or @Source applications

A customizable solution to fit retailer needs.





Grocery
& Food

Cosmetics

Pharmacy

Eyewear,
jewelry &
accessories

General
Merchandise

Apparel
& Footwear

40R ECON

The largest of our round visible tagging labels, the circular 40R RF is predominantly delivered as a bright yellow label with the trademarked security messaging logo for deterring theft. Higher performing to support customers with wider entrances the 40R is a favorite for many customers.



Frequency:

8.2 ± 5% MHz

Dimensions:

40mm round

Face sheet:

Yellow Paper -
Thermal Transfer with
Black Lock print

BENEFITS

Visible tagging.

Strong visual
deterrence with Black
Lock Print.

Improve on-shelf
product availability.





Grocery
& Food

Cosmetics

Pharmacy

Eyewear,
jewelry &
accessories

General
Merchandise

Apparel
& Footwear

410 ECON - ST - XP



Our 410 RF label is available in various product ranges (ECON, STANDARD, and XP) and is characterized by its versatility, as it is compatible with different products and sizes. Additionally, it has been designed for high-speed at-source application and to provide high-level protection and improved deactivation in-store.

BENEFITS

Best detection in wider aisle widths.

Designed for high-speed @Source integration.

Highly versatile, suitable for any product type.

Better detection with XP version.

Frequency:

8.2 ± 5% MHz

Dimensions:

40mm x 40mm (1.57" x 1.57")

Face sheet:

White Thermal Transfer Paper,
Black Thermal Transfer Paper,
White Thermal Transfer Paper
with Barcode Print, White Direct
Thermal Paper.





Grocery
& Food

Cosmetics

Pharmacy

Eyewear,
jewelry &
accessories

General
Merchandise

Apparel
& Footwear

3810 XP

The 3810 RF Label is a small, paper-thin RF label that provides hidden security by easily integrating into product packaging. It enables retailers to improve on-shelf availability and increase sales. Its thin construction was designed for high-speed auto applications, resulting in reduced labor costs.

BENEFITS

Highly versatile general purpose RF label.

Suitable for @Source or instore tagging programs.

Available with black lock logo for visible tagging programs.

A customizable solution to fit retailer needs.



Frequency:

8.2 ±5% MHz

Dimensions:

30 x 32 mm (1.18" x 1.26")

Face sheet:

Clear PET, Clear PET with Black Lock print, White thermal Transfer Paper, White Thermal Transfer Paper with print Black Lock, White thermal with customer print, Yellow Thermal Transfer Paper with customer logo.





Grocery
& Food

Cosmetics

Pharmacy

Eyewear,
jewelry &
accessories

General
Merchandise

Apparel
& Footwear

2933 XP

The original clear EAS label for visible tagging programs, our 2933 RF label is a circular, high-performance transparent label designed for anti-theft purposes. Larger in size than the 2928, this distinctive design offers improved detection where the label size is not a restriction.



Frequency:

8.2 MHz +/- 5%

Dimensions:

Ø 33 mm (1.30")

Face sheet:

Yellow Premium Grade Paper
with Black Lock Print, Clear PET,
Clear PET with black Lock print,
White Premium Grade Paper

BENEFITS

Enhanced deterrent
with a visible EAS
circuit.

Product protection
without obscuring your
brand.

Designed for high-
speed @Source
integration.

A customizable
solution to fit retailer
needs.





Grocery
& Food

Cosmetics

Pharmacy

Eyewear,
jewelry &
accessories

General
Merchandise

Apparel
& Footwear

710 XP

Our 710 RF label is characterized by its high-speed integration in source tagging, thanks to its anti-static protection, allowing integration into production lines for labeling beverages & food and apparel products.

BENEFITS

Good detection in wider aisles.

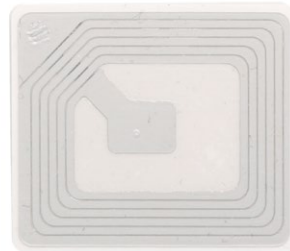
Designed for high-speed @Source integration.

Can be applied @Source or in-store.

Standard white face and clear.

Thinner construction for applying behind primary labels.

Apply on any product.



Frequency:

8.2 ± 5% MHz

Dimensions:

34.6 x 41.1 mm (1.36" x 1.62")

Face sheet:

PSG: White Premium Grade Paper, White Premium Grade Paper with customer print, Thermal Transfer Paper, Black, White with Barcode, SG: Clear PET.





Grocery
& Food

Cosmetics

Pharmacy

Eyewear,
jewelry &
accessories

General
Merchandise

Apparel
& Footwear

Cosmetics





Grocery
& Food

Cosmetics

Pharmacy

Eyewear,
jewelry &
accessories

General
Merchandise

Apparel
& Footwear

Cosmetics

PROTECTING HIGH-VALUE SMALL ITEMS

High value, small and discreet items are an obvious target for thieves and a problem for retailers to protect. Utilizing our Micro XP platform, to achieve class leading performance from some of the world's smallest RF labels means we can offer retailers a viable way to protect these high theft items without resorting to defensive merchandizing techniques.

PROTECTING YOUR BEAUTY PRODUCTS

Our RF labels for cosmetics are designed to suit a range of packaging sizes and shapes. The visible circuit acts as a deterrent, while the clear label ensures barcodes and other key product information are not obscured.



Grocery
& Food

Cosmetics

Pharmacy

Eyewear,
jewelry &
accessories

General
Merchandise

Apparel
& Footwear

2410XP

Within the XP range, the 2410RF label stands out for its ability to protect smaller items with a high risk of theft. Despite its small size, it offers exceptional detection, making it ideal for this purpose.



Frequency:

8.2 MHz +/- 5%

Dimensions:

24mm x 25mm (0.94" x 0.98")

Face sheet:

White Premium Grade Paper,
White Premium Grade Paper
with BC Print, White Premium
Grade Paper with customer print,
with Black Lock print, Clear PET,
Clear PET with Black Lock print,
Clear PET with customer print.

BENEFITS

Designed to protect
small items.

Aggressive Tamper-
resistant adhesive.

Customizable to fit
retailer / brand owner
needs.

Compatible with @
Source tagging
programs.

Supports visible tagging
programs.





Grocery
& Food

Cosmetics

Pharmacy

Eyewear,
jewelry &
accessories

General
Merchandise

Apparel
& Footwear

2928 XP MICROFLEX

The innovative design of our Microflex labels, incorporating the adhesive loop for securing open display items such as glasses and jewelry provides effective protection against theft without detrimental impacts to the customer experience or compromising brand identity.

BENEFITS

Allows consumers to try on products before purchasing.

Discrete protection for improved customer experience.

Improve on-shelf product availability.

Dedicated solution for open display of glasses, jewellery and accessories.

Minimise time at the checkout.



Frequency:

8.2 MHz +/- 5%

Dimensions:

30mm x 104mm (1.18" x 4.1")

Face sheet:

Clear with Black Lock print





Grocery
& Food

Cosmetics

Pharmacy

Eyewear,
jewelry &
accessories

General
Merchandise

Apparel
& Footwear

2928 XP shield tag

Offering supplementary protection for visible EAS labels, Checkpoint's Shield tag combines the RF label with additional overlay, designed to break apart if removal is attempted and frustrate casual thieves and ORC theft alike.

BENEFITS

Extremely difficult for thieves to remove in store or to clean for resale.

Slows down the EAS label removal process by up to 10x.

Improves shrink and sales numbers by increasing OSA.

Both label and overlay can be customized with branding or warning messages.

Suitable for @Source or in store applications.



Frequency:

8.2 MHz +/- 5%

Dimensions:

47mm (1.97")

Face sheet:

Clear PET with Black Lock print





Grocery
& Food

Cosmetics

Pharmacy

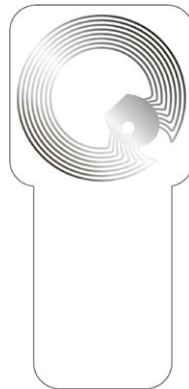
Eyewear,
jewelry &
accessories

General
Merchandise

Apparel
& Footwear

2928 XP super flag tag

Our Super Flag Tag concept was designed for protecting metallic products where traditional RF labels cannot be used. By elevating the RF label away from the packaging normal detection can be achieved, allowing retailers and brands to protect a wider range of items. The tamper-resistant tag wraps easily around box corners, sealing openings with high-bond adhesive that's tough to remove without visible damage to the packaging.



Frequency:

8.2 MHz +/- 5%

Dimensions:

60mm x 32mm (2.36" x 1.26")

Face sheet:

Clear PET

BENEFITS

Deter theft and packaging tampering.

Solution for metal products and metallic packaging.

Wraps easily around corner.

Innovative dual wing design for better adhesion to a variety of materials.

Difficult to remove without visible damage.

Available with optional Black Lock print.





Grocery
& Food

Cosmetics

Pharmacy

Eyewear,
jewelry &
accessories

General
Merchandise

Apparel
& Footwear

2928 XP

The most popular of our Micro labels, the 2928 RF label delivers premium performance for its size plus the additional deterrent used to support our visible tagging programs. Small, round with a customizable transparent top layer the design enables it to adapt to most vertical markets and applications.

BENEFITS

Solution for smaller, difficult to protect products.

Discrete protection for improved customer experience.

Supports Visible Tagging programs.

Suitable for in store or @Source applications

A customizable solution to fit retailer needs.



Frequency:
8.2 MHz +/- 5%

Dimensions:
Ø 28mm (1.10")

Face sheet:
Clear PET with customer logo,
Clear PET with Black Lock Print,
Clear PET





Grocery
& Food

Cosmetics

Pharmacy

Eyewear,
jewelry &
accessories

General
Merchandise

Apparel
& Footwear

2928 XP box wrap

The Box Wrap Label by Checkpoint is designed to prevent unwanted removal of products from carton boxes. By inserting an RF label into a PET wrap, we offer customers the opportunity to simultaneously seal cartons and add EAS protection with a single product.



Frequency:
8.2 MHz +/- 5%

Dimensions:
40 x 200 mm
(1.57" x 7.87")

Face sheet:
Clear PET with the
box seal and the
Black Lock print

BENEFITS

Product protection
without impacting brand
designs.

Seals top and bottom
of cartons to prevent
removal of contents.

Prevents tampering of
the RF label.

Wrap can be
customized with logo or
warning message.

Can be applied @
Source or in store.

Supports Visible
Tagging programs.





Grocery
& Food

Cosmetics

Pharmacy

Eyewear,
jewelry &
accessories

General
Merchandise

Apparel
& Footwear

2933 XP

The original clear EAS label for visible tagging programs, our 2933 RF label is a circular, high-performance transparent label designed for anti-theft purposes. Larger in size than the 2928, this distinctive design offers improved detection where the label size is not a restriction.



Frequency:

8.2 MHz +/- 5%

Dimensions:

Ø 33 mm (1.30")

Face sheet:

Yellow Premium Grade Paper
with Black Lock Print, Clear PET,
Clear PET with black Lock print,
White Premium Grade Paper

BENEFITS

Enhanced deterrent
with a visible EAS
circuit.

Product protection
without obscuring your
brand.

Designed for high-
speed @Source
integration.

A customizable
solution to fit retailer
needs.





Grocery
& Food

Cosmetics

Pharmacy

Eyewear,
jewelry &
accessories

General
Merchandise

Apparel
& Footwear

3710 XP

The 3710 RF Label is an anti-theft solution that safeguards merchandise without compromising brand visibility. Perfect for narrow and high-risk items such as eyeliners, lotions, jewelry, and small electronics, where other labels cannot fit, and could harm the brand and discourage customers from purchasing these products.



Frequency:

8.2 MHz

Dimensions:

15.1mm x 52mm (0.59" x 2.05")

Face sheet:

Clear PET with customer print,
Clear PET with Black Lock print,
Clear PET.

BENEFITS

Elongated, slender shape for difficult to protect items.

Clear window for barcodes and branding.

Designed to protect small items.

Tamper-resistant adhesive.

A customizable solution to fit retailer needs.





Grocery
& Food

Cosmetics

Pharmacy

Eyewear,
jewelry &
accessories

General
Merchandise

Apparel
& Footwear

3210 XP

With theft of high-value, discreet items such as cosmetics and intimate apparel on the rise, customers are seeking new solutions to protect their products reliably and conveniently. Our 3210 RF label is ideal for protection small, thin cosmetics, especially uncarded cosmetic products, offering enhanced protection without compromising aesthetics or convenience.



Frequency:

8.2 ± 5% MHz

Dimensions:

19 x 65 mm (0.75" x 2.56")

Face sheet:

Clear PET, Clear PET with customer branding.

BENEFITS

Designed for high-speed @Source integration.

Designed to protect small items.

Promotes branding.

Improve on-shelf product availability.

Clear window for barcodes and branding.





Grocery
& Food

Cosmetics

Pharmacy

Eyewear,
jewelry &
accessories

General
Merchandise

Apparel
& Footwear

2815XP

The 2815 RF is designed for high-theft markets, with a specialized version tailored specifically for footwear. This label seamlessly integrates into the Source Tagging process and offers superior heat tolerance, ensuring optimal performance during rigorous integration.

BENEFITS

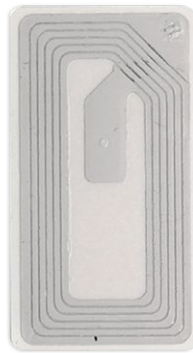
Designed for high-speed @Source integration.

Improved on-shelf product availability.

Customizable to fit retailer / brand owner needs.

Discrete protection for improved customer experience.

Footwear-specific version.



Frequency:

8.2 MHz +/- 5%

Dimensions:

49.3mmx26.7mm (1.94"x1.05")

Face sheet:

White Premium Grade Paper,
Premium Grade paper Printed Blue
arrow (specifically for footwear)





Grocery
& Food

Cosmetics

Pharmacy

Eyewear,
jewelry &
accessories

General
Merchandise

Apparel
& Footwear

3810 XP

The 3810 RF Label is a small, paper-thin RF label that provides hidden security by easily integrating into product packaging. It enables retailers to improve on-shelf availability and increase sales. Its thin construction was designed for high-speed auto applications, resulting in reduced labor costs.

BENEFITS

Highly versatile general purpose RF label.

Suitable for @Source or instore tagging programs.

Available with black lock logo for visible tagging programs.

A customizable solution to fit retailer needs.



Frequency:

8.2 ±5% MHz

Dimensions:

30 x 32 mm (1.18" x 1.26")

Face sheet:

Clear PET, Clear PET with Black Lock print, White thermal Transfer Paper, White Thermal Transfer Paper with print Black Lock, White thermal with customer print, Yellow Thermal Transfer Paper with customer logo.





Grocery
& Food

Cosmetics

Pharmacy

Eyewear,
jewelry &
accessories

General
Merchandise

Apparel
& Footwear

410 ECON - ST - XP



Our 410 RF label is available in various product ranges (ECON, STANDARD, and XP) and is characterized by its versatility, as it is compatible with different products and sizes. Additionally, it has been designed for high-speed at-source application and to provide high-level protection and improved deactivation in-store.

BENEFITS

Best detection in wider aisle widths.

Designed for high-speed @Source integration.

Highly versatile, suitable for any product type.

Better detection with XP version.

Frequency:

8.2 ± 5% MHz

Dimensions:

40mm x 40mm (1.57" x 1.57")

Face sheet:

White Thermal Transfer Paper,
Black Thermal Transfer Paper,
White Thermal Transfer Paper
with Barcode Print, White Direct
Thermal Paper.





Grocery
& Food

Cosmetics

Pharmacy

Eyewear,
jewelry &
accessories

General
Merchandise

Apparel
& Footwear

4115 XP

Our 4115 RF Metal label allows retailers to protect metallic products and packaging using the same EAS systems as they do for the rest of their inventory. Simply apply the patented label in-store or as part of your source tagging program for consistent compliance, optimal visibility and unprecedented performance.



Frequency:

8.0MHz +/- 0.3MHz

Dimensions:

41x14x0.8 mm (1.61"x0.55"x0.03")

Face sheet:

White TT paper with Black Lock print

BENEFITS

Can be applied directly to metal products and metallic packaging.

Invented, designed and produced fully in-house.

High-bond resistant adhesive.

Strong visual deterrence with Black Logo print.

Brand new design and manufacturing method to combat the usual issues caused by metal.





Grocery
& Food

Cosmetics

Pharmacy

Eyewear,
jewelry &
accessories

General
Merchandise

Apparel
& Footwear

710 XP

Our 710 RF label is characterized by its high-speed integration in source tagging, thanks to its anti-static protection, allowing integration into production lines for labeling beverages & food and apparel products.

BENEFITS

Good detection in wider aisles.

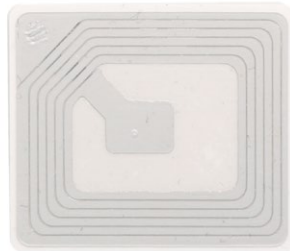
Designed for high-speed @Source integration.

Can be applied @Source or in-store.

Standard white face and clear.

Thinner construction for applying behind primary labels.

Apply on any product.



Frequency:

8.2 ± 5% MHz

Dimensions:

34.6 x 41.1 mm (1.36" x 1.62")

Face sheet:

PSG: White Premium Grade Paper, White Premium Grade Paper with customer print, Thermal Transfer Paper, Black, White with Barcode, SG: Clear PET.





Grocery
& Food

Cosmetics

Pharmacy

Eyewear,
jewelry &
accessories

General
Merchandise

Apparel
& Footwear

3110 XP

With theft of high-value, discreet items such as cosmetics and intimate apparel on the rise, customers are seeking new solutions to protect their products reliably and conveniently. Our 3110 RF label is ideal for protection small, thin cosmetics, especially blister-packaged products, offering enhanced protection without compromising aesthetics or convenience.

BENEFITS

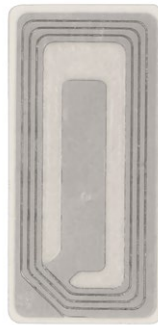
Designed to fit current blister packages for cosmetics.

Designed to protect small items.

Designed for high-speed @Source integration.

Promotes branding.

Improve on-shelf product availability.



Frequency:
8.2 ± 5% MHz

Dimensions:
22x47 mm (0.87"x1.85")

Face sheet:
White Thermal Transfer Paper





Grocery
& Food

Cosmetics

Pharmacy

Eyewear,
jewelry &
accessories

General
Merchandise

Apparel
& Footwear

Pharmacy





Grocery
& Food

Cosmetics

Pharmacy

Eyewear,
jewelry &
accessories

General
Merchandise

Apparel
& Footwear

Pharmacy

PROTECTING HIGH-VALUE SMALL ITEMS

High value, small and discreet items are an obvious target for thieves and a problem for retailers to protect. Utilizing our Micro XP platform, to achieve class leading performance from some of the world's smallest RF labels means we can offer retailers a viable way to protect these high theft items without resorting to defensive merchandizing techniques.

PROTECTING YOUR BEAUTY PRODUCTS

Our RF labels for cosmetics are designed to suit a range of packaging sizes and shapes. The visible circuit acts as a deterrent, while the clear label ensures barcodes and other key product information are not obscured.



Grocery
& Food

Cosmetics

Pharmacy

Eyewear,
jewelry &
accessories

General
Merchandise

Apparel
& Footwear

2410XP

Within the XP range, the 2410RF label stands out for its ability to protect smaller items with a high risk of theft. Despite its small size, it offers exceptional detection, making it ideal for this purpose.



Frequency:

8.2 MHz +/- 5%

Dimensions:

24mm x 25mm (0.94" x 0.98")

Face sheet:

White Premium Grade Paper,
White Premium Grade Paper
with BC Print, White Premium
Grade Paper with customer print,
with Black Lock print, Clear PET,
Clear PET with Black Lock print,
Clear PET with customer print.

BENEFITS

Designed to protect
small items.

Aggressive Tamper-
resistant adhesive.

Customizable to fit
retailer / brand owner
needs.

Compatible with @
Source tagging
programs.

Supports visible tagging
programs.





Grocery
& Food

Cosmetics

Pharmacy

Eyewear,
jewelry &
accessories

General
Merchandise

Apparel
& Footwear

2928 XP shield tag

Offering supplementary protection for visible EAS labels, Checkpoint's Shield tag combines the RF label with additional overlay, designed to break apart if removal is attempted and frustrate casual thieves and ORC theft alike.

BENEFITS

Extremely difficult for thieves to remove in store or to clean for resale.

Slows down the EAS label removal process by up to 10x.

Improves shrink and sales numbers by increasing OSA.

Both label and overlay can be customized with branding or warning messages.

Suitable for @Source or in store applications.



Frequency:

8.2 MHz +/- 5%

Dimensions:

47mm (1.97")

Face sheet:

Clear PET with Black Lock print





Grocery
& Food

Cosmetics

Pharmacy

Eyewear,
jewelry &
accessories

General
Merchandise

Apparel
& Footwear

2928 XP super flag tag

Our Super Flag Tag concept was designed for protecting metallic products where traditional RF labels cannot be used. By elevating the RF label away from the packaging normal detection can be achieved, allowing retailers and brands to protect a wider range of items. The tamper-resistant tag wraps easily around box corners, sealing openings with high-bond adhesive that's tough to remove without visible damage to the packaging.



Frequency:

8.2 MHz +/- 5%

Dimensions:

60mm x 32mm (2.36" x 1.26")

Face sheet:

Clear PET

BENEFITS

Deter theft and packaging tampering.

Solution for metal products and metallic packaging.

Wraps easily around corner.

Innovative dual wing design for better adhesion to a variety of materials.

Difficult to remove without visible damage.

Available with optional Black Lock print.





Grocery
& Food

Cosmetics

Pharmacy

Eyewear,
jewelry &
accessories

General
Merchandise

Apparel
& Footwear

2933 XP

The original clear EAS label for visible tagging programs, our 2933 RF label is a circular, high-performance transparent label designed for anti-theft purposes. Larger in size than the 2928, this distinctive design offers improved detection where the label size is not a restriction.



Frequency:

8.2 MHz +/- 5%

Dimensions:

Ø 33 mm (1.30")

Face sheet:

Yellow Premium Grade Paper
with Black Lock Print, Clear PET,
Clear PET with black Lock print,
White Premium Grade Paper

BENEFITS

Enhanced deterrent
with a visible EAS
circuit.

Product protection
without obscuring your
brand.

Designed for high-
speed @Source
integration.

A customizable
solution to fit retailer
needs.





Grocery
& Food

Cosmetics

Pharmacy

Eyewear,
jewelry &
accessories

General
Merchandise

Apparel
& Footwear

3710 XP

The 3710 RF Label is an anti-theft solution that safeguards merchandise without compromising brand visibility. Perfect for narrow and high-risk items such as eyeliners, lotions, jewelry, and small electronics, where other labels cannot fit, and could harm the brand and discourage customers from purchasing these products.



Frequency:

8.2 MHz

Dimensions:

15.1mm x 52mm (0.59" x 2.05")

Face sheet:

Clear PET with customer print,
Clear PET with Black Lock print,
Clear PET.

BENEFITS

Elongated, slender shape for difficult to protect items.

Clear window for barcodes and branding.

Designed to protect small items.

Tamper-resistant adhesive.

A customizable solution to fit retailer needs.





Grocery
& Food

Cosmetics

Pharmacy

Eyewear,
jewelry &
accessories

General
Merchandise

Apparel
& Footwear

3810 XP

The 3810 RF Label is a small, paper-thin RF label that provides hidden security by easily integrating into product packaging. It enables retailers to improve on-shelf availability and increase sales. Its thin construction was designed for high-speed auto applications, resulting in reduced labor costs.

BENEFITS

Highly versatile general purpose RF label.

Suitable for @Source or instore tagging programs.

Available with black lock logo for visible tagging programs.

A customizable solution to fit retailer needs.



Frequency:

8.2 ±5% MHz

Dimensions:

30 x 32 mm (1.18" x 1.26")

Face sheet:

Clear PET, Clear PET with Black Lock print, White thermal Transfer Paper, White Thermal Transfer Paper with print Black Lock, White thermal with customer print, Yellow Thermal Transfer Paper with customer logo.





Grocery
& Food

Cosmetics

Pharmacy

Eyewear,
jewelry &
accessories

General
Merchandise

Apparel
& Footwear

2815XP

The 2815 RF is designed for high-theft markets, with a specialized version tailored specifically for footwear. This label seamlessly integrates into the Source Tagging process and offers superior heat tolerance, ensuring optimal performance during rigorous integration.

BENEFITS

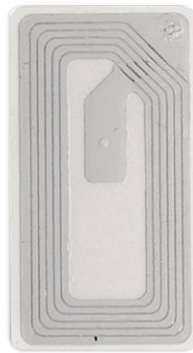
Designed for high-speed @Source integration.

Improved on-shelf product availability.

Customizable to fit retailer / brand owner needs.

Discrete protection for improved customer experience.

Footwear-specific version.



Frequency:

8.2 MHz +/- 5%

Dimensions:

49.3mmx26.7mm (1.94"x1.05")

Face sheet:

White Premium Grade Paper,
Premium Grade paper Printed Blue
arrow (specifically for footwear)





Grocery
& Food

Cosmetics

Pharmacy

Eyewear,
jewelry &
accessories

General
Merchandise

Apparel
& Footwear

4115 XP

Our 4115 RF Metal label allows retailers to protect metallic products and packaging using the same EAS systems as they do for the rest of their inventory. Simply apply the patented label in-store or as part of your source tagging program for consistent compliance, optimal visibility and unprecedented performance.



Frequency:

8.0MHz +/- 0.3MHz

Dimensions:

41x14x0.8 mm (1.61"x0.55"x0.03")

Face sheet:

White TT paper with Black Lock print

BENEFITS

Can be applied directly to metal products and metallic packaging.

Invented, designed and produced fully in-house.

High-bond resistant adhesive.

Strong visual deterrence with Black Logo print.

Brand new design and manufacturing method to combat the usual issues caused by metal.





Grocery
& Food

Cosmetics

Pharmacy

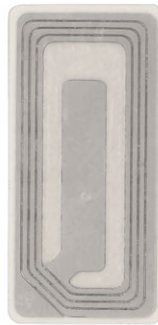
Eyewear,
jewelry &
accessories

General
Merchandise

Apparel
& Footwear

3110 XP

With theft of high-value, discreet items such as cosmetics and intimate apparel on the rise, customers are seeking new solutions to protect their products reliably and conveniently. Our 3110 RF label is ideal for protection small, thin cosmetics, especially blister-packaged products, offering enhanced protection without compromising aesthetics or convenience.



Frequency:
8.2 ± 5% MHz

Dimensions:
22x47 mm (0.87"x1.85")

Face sheet:
White Thermal Transfer Paper

BENEFITS

Designed to fit current blister packages for cosmetics.

Designed to protect small items.

Designed for high-speed @Source integration.

Promotes branding.

Improve on-shelf product availability.





Grocery
& Food

Cosmetics

Pharmacy

Eyewear,
jewelry &
accessories

General
Merchandise

Apparel
& Footwear

Eyewear, jewelry & accessories





Grocery
& Food

Cosmetics

Pharmacy

Eyewear,
jewelry &
accessories

General
Merchandise

Apparel
& Footwear

Eyewear, jewelry & accessories

ENHANCING CUSTOMER EXPERIENCE AND PROTECTING PRODUCTS

Retailers are increasingly focused on enhancing customer experience by removing sales barriers such as closed display cases, encouraging greater product interaction while ensuring effective product protection.

PROTECTING RETAIL DISPLAYS: INTRODUCING MICROFLEX LABELS

The in-store display of products such as glasses, jewelry, and fashion accessories present protection challenges. Retailers seek solutions that ensure effective protection without compromising the customer experience. In response to this need, we offer our MicroFlex labels: delivering high detection in micro format, ensuring optimal protection with minimal customer impact.



Grocery
& Food

Cosmetics

Pharmacy

Eyewear,
jewelry &
accessories

General
Merchandise

Apparel
& Footwear

2410XP

Within the XP range, the 2410RF label stands out for its ability to protect smaller items with a high risk of theft. Despite its small size, it offers exceptional detection, making it ideal for this purpose.



Frequency:

8.2 MHz +/- 5%

Dimensions:

24mm x 25mm (0.94" x 0.98")

Face sheet:

White Premium Grade Paper,
White Premium Grade Paper
with BC Print, White Premium
Grade Paper with customer print,
with Black Lock print, Clear PET,
Clear PET with Black Lock print,
Clear PET with customer print.

BENEFITS

Designed to protect
small items.

Aggressive Tamper-
resistant adhesive.

Customizable to fit
retailer / brand owner
needs.

Compatible with @
Source tagging
programs.

Supports visible tagging
programs.





Grocery
& Food

Cosmetics

Pharmacy

Eyewear,
jewelry &
accessories

General
Merchandise

Apparel
& Footwear

2928 XP

The most popular of our Micro labels, the 2928 RF label delivers premium performance for its size plus the additional deterrent used to support our visible tagging programs. Small, round with a customizable transparent top layer the design enables it to adapt to most vertical markets and applications.

BENEFITS

Solution for smaller, difficult to protect products.

Discrete protection for improved customer experience.

Supports Visible Tagging programs.

Suitable for in store or @Source applications

A customizable solution to fit retailer needs.



Frequency:

8.2 MHz +/- 5%

Dimensions:

Ø 28mm (1.10")

Face sheet:

Clear PET with customer logo,
Clear PET with Black Lock Print,
Clear PET





Grocery
& Food

Cosmetics

Pharmacy

Eyewear,
jewelry &
accessories

General
Merchandise

Apparel
& Footwear

2928 XP MICROFLEX

The innovative design of our Microflex labels, incorporating the adhesive loop for securing open display items such as glasses and jewelry provides effective protection against theft without detrimental impacts to the customer experience or compromising brand identity.

BENEFITS

Allows consumers to try on products before purchasing.

Discrete protection for improved customer experience.

Improve on-shelf product availability.

Dedicated solution for open display of glasses, jewellery and accessories.

Minimise time at the checkout.



Frequency:
8.2 MHz +/- 5%

Dimensions:
30mm x 104mm (1.18" x 4.1")

Face sheet:
Clear with Black Lock print





Grocery
& Food

Cosmetics

Pharmacy

Eyewear,
jewelry &
accessories

General
Merchandise

Apparel
& Footwear

3810 XP

The 3810 RF Label is a small, paper-thin RF label that provides hidden security by easily integrating into product packaging. It enables retailers to improve on-shelf availability and increase sales. Its thin construction was designed for high-speed auto applications, resulting in reduced labor costs.

BENEFITS

Highly versatile general purpose RF label.

Suitable for @Source or instore tagging programs.

Available with black lock logo for visible tagging programs.

A customizable solution to fit retailer needs.



Frequency:

8.2 ±5% MHz

Dimensions:

30 x 32 mm (1.18" x 1.26")

Face sheet:

Clear PET, Clear PET with Black Lock print, White thermal Transfer Paper, White Thermal Transfer Paper with print Black Lock, White thermal with customer print, Yellow Thermal Transfer Paper with customer logo.





Grocery
& Food

Cosmetics

Pharmacy

Eyewear,
jewelry &
accessories

General
Merchandise

Apparel
& Footwear

General Merchandise





Grocery
& Food

Cosmetics

Pharmacy

Eyewear,
jewelry &
accessories

General
Merchandise

Apparel
& Footwear

General Merchandise

PROTECT MORE OF YOUR ITEMS THAN EVER BEFORE

Our range of RF labels for general merchandise can be applied at source or in-store, giving customers complete flexibility and freedom of choice with their EAS protection. With options to cover virtually any type of product, our general merchandise range are amongst the best performing labels on the market.

LABELS TO SUIT YOUR BRAND

Many of the labels we offer have the ability to be customized with your logo printed onto the label directly, allowing extra room for branding on top of the excellent security and detection you'd expect from our RF labels.

CUSTOM PRINTED LABELS

Our customized RF anti-theft labels are a technological solution used to protect products and prevent theft in retail. They are suitable for use on any product and come in various sizes and shapes for easy application, whether manual or automatic, visible or hidden. We can print customer logos, safety warnings or any other Marketing or promotional messaging at one of our specialist print locations around the world.

ENHANCING CUSTOMER EXPERIENCE AND PROTECTING PRODUCTS

Retailers are increasingly focused on enhancing customer experience by removing sales barriers such as closed display cases, encouraging greater product interaction while ensuring effective product protection.

PREVENTING THEFT IN THE DIY MARKET

In the DIY market, batteries, drills, power tools, and door locks are some of the most stolen items. We provide customized solutions that accommodate various shapes and sizes to protect your inventory and prevent theft, ensuring peace of mind for both you and your customers.



Grocery
& Food

Cosmetics

Pharmacy

Eyewear,
jewelry &
accessories

General
Merchandise

Apparel
& Footwear

2410XP

Within the XP range, the 2410RF label stands out for its ability to protect smaller items with a high risk of theft. Despite its small size, it offers exceptional detection, making it ideal for this purpose.

BENEFITS

Designed to protect small items.

Aggressive Tamper-resistant adhesive.

Customizable to fit retailer / brand owner needs.

Compatible with @ Source tagging programs.

Supports visible tagging programs.



Frequency:

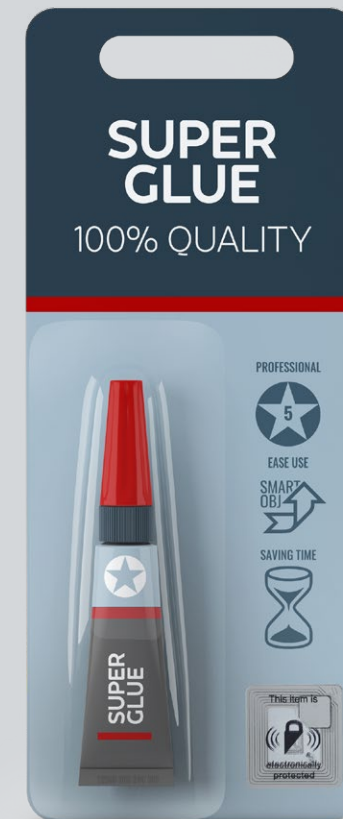
8.2 MHz +/- 5%

Dimensions:

24mm x 25mm (0.94" x 0.98")

Face sheet:

White Premium Grade Paper, White Premium Grade Paper with BC Print, White Premium Grade Paper with customer print, with Black Lock print, Clear PET, Clear PET with Black Lock print, Clear PET with customer print.





Grocery
& Food

Cosmetics

Pharmacy

Eyewear,
jewelry &
accessories

General
Merchandise

Apparel
& Footwear

2815XP

The 2815 RF is designed for high-theft markets, with a specialized version tailored specifically for footwear. This label seamlessly integrates into the Source Tagging process and offers superior heat tolerance, ensuring optimal performance during rigorous integration.

BENEFITS

Designed for high-speed @Source integration.

Improved on-shelf product availability.

Customizable to fit retailer / brand owner needs.

Discrete protection for improved customer experience.

Footwear-specific version.



Frequency:

8.2 MHz +/- 5%

Dimensions:

49.3mmx26.7mm (1.94"x1.05")

Face sheet:

White Premium Grade Paper,
Premium Grade paper Printed Blue
arrow (specifically for footwear)





Grocery
& Food

Cosmetics

Pharmacy

Eyewear,
jewelry &
accessories

General
Merchandise

Apparel
& Footwear

2928 XP

The most popular of our Micro labels, the 2928 RF label delivers premium performance for its size plus the additional deterrent used to support our visible tagging programs. Small, round with a customizable transparent top layer the design enables it to adapt to most vertical markets and applications.

BENEFITS

Solution for smaller, difficult to protect products.

Discrete protection for improved customer experience.

Supports Visible Tagging programs.

Suitable for in store or @Source applications

A customizable solution to fit retailer needs.



Frequency:

8.2 MHz +/- 5%

Dimensions:

Ø 28mm (1.10")

Face sheet:

Clear PET with customer logo,
Clear PET with Black Lock Print,
Clear PET





Grocery
& Food

Cosmetics

Pharmacy

Eyewear,
jewelry &
accessories

General
Merchandise

Apparel
& Footwear

2933 XP

The original clear EAS label for visible tagging programs, our 2933 RF label is a circular, high-performance transparent label designed for anti-theft purposes. Larger in size than the 2928, this distinctive design offers improved detection where the label size is not a restriction.



Frequency:

8.2 MHz +/- 5%

Dimensions:

Ø 33 mm (1.30")

Face sheet:

Yellow Premium Grade Paper
with Black Lock Print, Clear PET,
Clear PET with black Lock print,
White Premium Grade Paper

BENEFITS

Enhanced deterrent
with a visible EAS
circuit.

Product protection
without obscuring your
brand.

Designed for high-
speed @Source
integration.

A customizable
solution to fit retailer
needs.





Grocery
& Food

Cosmetics

Pharmacy

Eyewear,
jewelry &
accessories

General
Merchandise

Apparel
& Footwear

3710 XP

The 3710 RF Label is an anti-theft solution that safeguards merchandise without compromising brand visibility. Perfect for narrow and high-risk items such as eyeliners, lotions, jewelry, and small electronics, where other labels cannot fit, and could harm the brand and discourage customers from purchasing these products.



Frequency:
8.2 MHz

Dimensions:
15.1mm x 52mm (0.59" x 2.05")

Face sheet:
Clear PET with customer print,
Clear PET with Black Lock print,
Clear PET.

BENEFITS

Elongated, slender shape for difficult to protect items.

Clear window for barcodes and branding.

Designed to protect small items.

Tamper-resistant adhesive.

A customizable solution to fit retailer needs.





Grocery
& Food

Cosmetics

Pharmacy

Eyewear,
jewelry &
accessories

General
Merchandise

Apparel
& Footwear

4115 XP

Our 4115 RF Metal label allows retailers to protect metallic products and packaging using the same EAS systems as they do for the rest of their inventory. Simply apply the patented label in-store or as part of your source tagging program for consistent compliance, optimal visibility and unprecedented performance.



Frequency:
8.0MHz +/- 0.3MHz

Dimensions:
41x14x0.8 mm (1.61"x0.55"x0.03")

Face sheet:
White TT paper with Black Lock print

BENEFITS

Can be applied directly to metal products and metallic packaging.

Invented, designed and produced fully in-house.

High-bond resistant adhesive.

Strong visual deterrence with Black Logo print.

Brand new design and manufacturing method to combat the usual issues caused by metal.





Grocery
& Food

Cosmetics

Pharmacy

Eyewear,
jewelry &
accessories

General
Merchandise

Apparel
& Footwear

3810 XP

The 3810 RF Label is a small, paper-thin RF label that provides hidden security by easily integrating into product packaging. It enables retailers to improve on-shelf availability and increase sales. Its thin construction was designed for high-speed auto applications, resulting in reduced labor costs.

BENEFITS

Highly versatile general purpose RF label.

Suitable for @Source or instore tagging programs.

Available with black lock logo for visible tagging programs.

A customizable solution to fit retailer needs.



Frequency:

8.2 ±5% MHz

Dimensions:

30 x 32 mm (1.18" x 1.26")

Face sheet:

Clear PET, Clear PET with Black Lock print, White thermal Transfer Paper, White Thermal Transfer Paper with print Black Lock, White thermal with customer print, Yellow Thermal Transfer Paper with customer logo.





Grocery
& Food

Cosmetics

Pharmacy

Eyewear,
jewelry &
accessories

General
Merchandise

Apparel
& Footwear

40R ECON

The largest of our round visible tagging labels, the circular 40R RF is predominantly delivered as a bright yellow label with the trademarked security messaging logo for deterring theft. Higher performing to support customers with wider entrances the 40R is a favorite for many customers.



Frequency:

8.2 ± 5% MHz

Dimensions:

40mm round

Face sheet:

Yellow Paper -
Thermal Transfer with
Black Lock print

BENEFITS

Visible tagging.

Strong visual
deterrence with Black
Lock Print.

Improve on-shelf
product availability.





Grocery
& Food

Cosmetics

Pharmacy

Eyewear,
jewelry &
accessories

General
Merchandise

Apparel
& Footwear

410 ECON - ST - XP

Our 410 RF label is available in various product ranges (ECON, STANDARD, and XP) and is characterized by its versatility, as it is compatible with different products and sizes. Additionally, it has been designed for high-speed at-source application and to provide high-level protection and improved deactivation in-store.

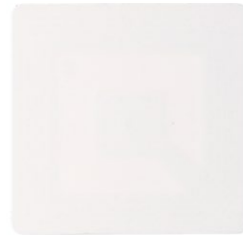
BENEFITS

Best detection in wider aisle widths.

Designed for high-speed @Source integration.

Highly versatile, suitable for any product type.

Better detection with XP version.



Frequency:

8.2 ± 5% MHz

Dimensions:

40mm x 40mm (1.57" x 1.57")

Face sheet:

White Thermal Transfer Paper,
Black Thermal Transfer Paper,
White Thermal Transfer Paper
with Barcode Print, White Direct
Thermal Paper.





Grocery
& Food

Cosmetics

Pharmacy

Eyewear,
jewelry &
accessories

General
Merchandise

Apparel
& Footwear

710 XP

Our 710 RF label is characterized by its high-speed integration in source tagging, thanks to its anti-static protection, allowing integration into production lines for labeling beverages & food and apparel products.

BENEFITS

Good detection in wider aisles.

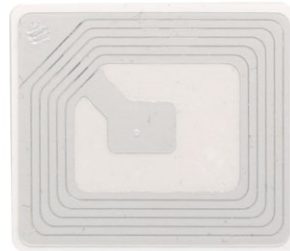
Designed for high-speed @Source integration.

Can be applied @Source or in-store.

Standard white face and clear.

Thinner construction for applying behind primary labels.

Apply on any product.



Frequency:

8.2 ± 5% MHz

Dimensions:

34.6 x 41.1 mm (1.36" x 1.62")

Face sheet:

PSG: White Premium Grade Paper, White Premium Grade Paper with customer print, Thermal Transfer Paper, Black, White with Barcode, SG: Clear PET.





Grocery
& Food

Cosmetics

Pharmacy

Eyewear,
jewelry &
accessories

General
Merchandise

Apparel
& Footwear

2928 XP shield tag

Offering supplementary protection for visible EAS labels, Checkpoint's Shield tag combines the RF label with additional overlay, designed to break apart if removal is attempted and frustrate casual thieves and ORC theft alike.

BENEFITS

Extremely difficult for thieves to remove in store or to clean for resale.

Slows down the EAS label removal process by up to 10x.

Improves shrink and sales numbers by increasing OSA.

Both label and overlay can be customized with branding or warning messages.

Suitable for @Source or in store applications.



Frequency:

8.2 MHz +/- 5%

Dimensions:

47mm (1.97")

Face sheet:

Clear PET with Black Lock print





Grocery
& Food

Cosmetics

Pharmacy

Eyewear,
jewelry &
accessories

General
Merchandise

Apparel
& Footwear

2928 XP super flag tag

Our Super Flag Tag concept was designed for protecting metallic products where traditional RF labels cannot be used. By elevating the RF label away from the packaging normal detection can be achieved, allowing retailers and brands to protect a wider range of items. The tamper-resistant tag wraps easily around box corners, sealing openings with high-bond adhesive that's tough to remove without visible damage to the packaging.

BENEFITS

Deter theft and packaging tampering.

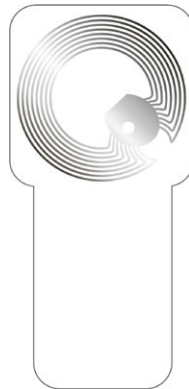
Solution for metal products and metallic packaging.

Wraps easily around corner.

Innovative dual wing design for better adhesion to a variety of materials.

Difficult to remove without visible damage.

Available with optional Black Lock print.



Frequency:

8.2 MHz +/- 5%

Dimensions:

60mm x 32mm (2.36" x 1.26")

Face sheet:

Clear PET





Grocery
& Food

Cosmetics

Pharmacy

Eyewear,
jewelry &
accessories

General
Merchandise

Apparel
& Footwear

2928 XP box wrap

The Box Wrap Label by Checkpoint is designed to prevent unwanted removal of products from carton boxes. By inserting an RF label into a PET wrap, we offer customers the opportunity to simultaneously seal cartons and add EAS protection with a single product.



Frequency:
8.2 MHz +/- 5%

Dimensions:
40 x 200 mm
(1.57" x 7.87")

Face sheet:
Clear PET with the
box seal and the
Black Lock print

BENEFITS

Product protection
without impacting brand
designs.

Seals top and bottom
of cartons to prevent
removal of contents.

Prevents tampering of
the RF label.

Wrap can be
customized with logo or
warning message.

Can be applied @
Source or in store.

Supports Visible
Tagging programs.





Grocery
& Food

Cosmetics

Pharmacy

Eyewear,
jewelry &
accessories

General
Merchandise

Apparel
& Footwear

3210 XP

With theft of high-value, discreet items such as cosmetics and intimate apparel on the rise, customers are seeking new solutions to protect their products reliably and conveniently. Our 3210 RF label is ideal for protection small, thin cosmetics, especially uncarded cosmetic products, offering enhanced protection without compromising aesthetics or convenience.



Frequency:

8.2 ± 5% MHz

Dimensions:

19 x 65 mm (0.75" x 2.56")

Face sheet:

Clear PET, Clear PET with customer branding.

BENEFITS

Designed for high-speed @Source integration.

Designed to protect small items.

Promotes branding.

Improve on-shelf product availability.

Clear window for barcodes and branding.





Grocery
& Food

Cosmetics

Pharmacy

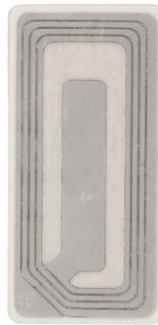
Eyewear,
jewelry &
accessories

General
Merchandise

Apparel
& Footwear

3110 XP

With theft of high-value, discreet items such as cosmetics and intimate apparel on the rise, customers are seeking new solutions to protect their products reliably and conveniently. Our 3110 RF label is ideal for protection small, thin cosmetics, especially blister-packaged products, offering enhanced protection without compromising aesthetics or convenience.



Frequency:
8.2 ± 5% MHz

Dimensions:
22x47 mm (0.87"x1.85")

Face sheet:
White Thermal Transfer Paper

BENEFITS

Designed to fit current blister packages for cosmetics.

Designed to protect small items.

Designed for high-speed @Source integration.

Promotes branding.

Improve on-shelf product availability.





Grocery
& Food

Cosmetics

Pharmacy

Eyewear,
jewelry &
accessories

General
Merchandise

Apparel
& Footwear

Apparel & Footwear





Grocery
& Food

Cosmetics

Pharmacy

Eyewear,
jewelry &
accessories

General
Merchandise

Apparel
& Footwear

Apparel & Footwear

INNOVATIVE APPAREL LABEL SOLUTIONS FOR BRAND INTEGRATION

Our range of specialist apparel labels offer the best possible performance, along with the added features essential when integrating into brand tickets, wash / care labels or pocket tags.

ROBUST TESTING ENSURES DURABILITY AND RISK MITIGATION

Our unique label range options are robustly tested to ensure the labels survive the integration process while mitigating the reactivation risks associated when RF labels are left inside garments or footwear.

TAILORED LABEL SOLUTIONS FOR CLOTHING AND FOOTWEAR

Whether you want visible labels for clothing or integrated solutions for shoes, we work with clothing manufacturers and retailers around the world to ensure the best and most innovative solutions are developed to meet your needs.



Grocery
& Food

Cosmetics

Pharmacy

Eyewear,
jewelry &
accessories

General
Merchandise

Apparel
& Footwear

2815XP

The 2815 RF is designed for high-theft markets, with a specialized version tailored specifically for footwear. This label seamlessly integrates into the Source Tagging process and offers superior heat tolerance, ensuring optimal performance during rigorous integration.

BENEFITS

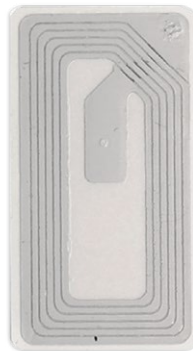
Designed for high-speed @Source integration.

Improved on-shelf product availability.

Customizable to fit retailer / brand owner needs.

Discrete protection for improved customer experience.

Footwear-specific version.



Frequency:

8.2 MHz +/- 5%

Dimensions:

49.3mmx26.7mm (1.94"x1.05")

Face sheet:

White Premium Grade Paper,
Premium Grade paper Printed Blue
arrow (specifically for footwear)





Grocery
& Food

Cosmetics

Pharmacy

Eyewear,
jewelry &
accessories

General
Merchandise

Apparel
& Footwear

2928 XP

The most popular of our Micro labels, the 2928 RF label delivers premium performance for its size plus the additional deterrent used to support our visible tagging programs. Small, round with a customizable transparent top layer the design enables it to adapt to most vertical markets and applications.

BENEFITS

Solution for smaller, difficult to protect products.

Discrete protection for improved customer experience.

Supports Visible Tagging programs.

Suitable for in store or @Source applications

A customizable solution to fit retailer needs.



Frequency:

8.2 MHz +/- 5%

Dimensions:

Ø 28mm (1.10")

Face sheet:

Clear PET with customer logo,
Clear PET with Black Lock Print,
Clear PET





Grocery
& Food

Cosmetics

Pharmacy

Eyewear,
jewelry &
accessories

General
Merchandise

Apparel
& Footwear

2933 XP

The original clear EAS label for visible tagging programs, our 2933 RF label is a circular, high-performance transparent label designed for anti-theft purposes. Larger in size than the 2928, this distinctive design offers improved detection where the label size is not a restriction.

**Frequency:**

8.2 MHz +/- 5%

Dimensions:

Ø 33 mm (1.30")

Face sheet:

Yellow Premium Grade Paper
with Black Lock Print, Clear PET,
Clear PET with black Lock print,
White Premium Grade Paper

BENEFITS

Enhanced deterrent
with a visible EAS
circuit.

Product protection
without obscuring your
brand.

Designed for high-
speed @Source
integration.

A customizable
solution to fit retailer
needs.





Grocery
& Food

Cosmetics

Pharmacy

Eyewear,
jewelry &
accessories

General
Merchandise

Apparel
& Footwear

3610XP

The 3610 RF label is an anti-theft solution that provides theft protection and ensures customer comfort, perfect for intimate apparel and clothing items such as blouses, shirts, and scarves. With its slim design, it efficiently protects both the garment and the brand.



Frequency:
8.2 MHz +/- 5%

Dimensions:
15.1mm x 52mm (0.59" x 2.05")

Face sheet:
White Premium Grade Paper

BENEFITS

Sewn-in solutions for discreet protection.

Combats organized retail crime (ORC).

RF circuit self-destructs in the wash.

Designed to protect intimates and small items.

Adaptable to any product in the category.





Grocery
& Food

Cosmetics

Pharmacy

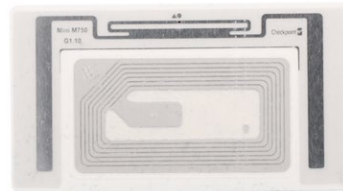
Eyewear,
jewelry &
accessories

General
Merchandise

Apparel
& Footwear

UNO RF/RFID

The UNO RF/RFID dual technology label combines all the benefits of RF EAS protection and RAIN RFID in one inlay, the UNO label saves retailers the additional costs of either double tagging or replacing RF EAS hardware while still offering the benefits of inventory control and accuracy through RFID.



Frequency:

RF 8.2 MHz +/- 5%
RFID 860-960Mhz

Dimensions:

75mm x 40mm

BENEFITS

Source tagging provides visibility throughout the supply chain.

Helps reduce out-of-stocks, reduce working capital and increase sales.

EAS labels deactivate as part of a normal checkout process.

Facilitates a successful Omni-Channel sales process.

Easily converted into sew in, pocket tags, or branded tickets.

Eliminates time and costs of applying hard tags in store.

Can be applied and encoded @Source.





Grocery
& Food

Cosmetics

Pharmacy

Eyewear,
jewelry &
accessories

General
Merchandise

Apparel
& Footwear

3810 XP

The 3810 RF Label is a small, paper-thin RF label that provides hidden security by easily integrating into product packaging. It enables retailers to improve on-shelf availability and increase sales. Its thin construction was designed for high-speed auto applications, resulting in reduced labor costs.

BENEFITS

Highly versatile general purpose RF label.

Suitable for @Source or instore tagging programs.

Available with black lock logo for visible tagging programs.

A customizable solution to fit retailer needs.



Frequency:

8.2 ±5% MHz

Dimensions:

30 x 32 mm (1.18" x 1.26")

Face sheet:

Clear PET, Clear PET with Black Lock print, White thermal Transfer Paper, White Thermal Transfer Paper with print Black Lock, White thermal with customer print, Yellow Thermal Transfer Paper with customer logo.





Grocery
& Food

Cosmetics

Pharmacy

Eyewear,
jewelry &
accessories

General
Merchandise

Apparel
& Footwear

710 XP

Our 710 RF label is characterized by its high-speed integration in source tagging, thanks to its anti-static protection, allowing integration into production lines for labeling beverages & food and apparel products.

BENEFITS

Good detection in wider aisles.

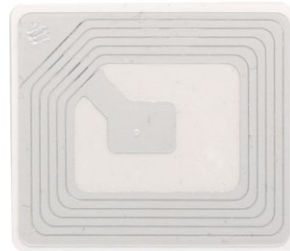
Designed for high-speed @Source integration.

Can be applied @Source or in-store.

Standard white face and clear.

Thinner construction for applying behind primary labels.

Apply on any product.



Frequency:

8.2 ± 5% MHz

Dimensions:

34.6 x 41.1 mm (1.36" x 1.62")

Face sheet:

PSG: White Premium Grade Paper, White Premium Grade Paper with customer print, Thermal Transfer Paper, Black, White with Barcode, SG: Clear PET.





Grocery
& Food

Cosmetics

Pharmacy

Eyewear,
jewelry &
accessories

General
Merchandise

Apparel
& Footwear

815 Shoe

Checkpoint has developed a specific solution for source tagging footwear: the 815 RF Shoe Label. This unique label has a patented double deactivation system which guarantees the permanent deactivation of the label inside the shoe when it is integrated correctly according to the instructions in this manual.



Frequency:

8.2 ± 5% MHz

Dimensions:

46 mm x 31 mm (1.81" x 1.22")

Face sheet:

White Uncoated Litho Paper

BENEFITS

Designed only for footwear integration.

Redundant secondary deactivation to mitigate tag pollution issues.

Hidden in shoes but deactivates at POS as normal

Discrete protection for improved customer experience.

Printed with instructions for integration.





Grocery
& Food

Cosmetics

Pharmacy

Eyewear,
jewelry &
accessories

General
Merchandise

Apparel
& Footwear

3210 XP

With theft of high-value, discreet items such as cosmetics and intimate apparel on the rise, customers are seeking new solutions to protect their products reliably and conveniently. Our 3210 RF label is ideal for protection small, thin cosmetics, especially uncarded cosmetic products, offering enhanced protection without compromising aesthetics or convenience.



Frequency:

8.2 ± 5% MHz

Dimensions:

19 x 65 mm (0.75" x 2.56")

Face sheet:

Clear PET, Clear PET with customer branding.

BENEFITS

Designed for high-speed @Source integration.

Designed to protect small items.

Promotes branding.

Improve on-shelf product availability.

Clear window for barcodes and branding.





Grocery
& Food

Cosmetics

Pharmacy

Eyewear,
jewelry &
accessories

General
Merchandise

Apparel
& Footwear

410 ECON - ST - XP



Our 410 RF label is available in various product ranges (ECON, STANDARD, and XP) and is characterized by its versatility, as it is compatible with different products and sizes. Additionally, it has been designed for high-speed at-source application and to provide high-level protection and improved deactivation in-store.

BENEFITS

Best detection in wider aisle widths.

Designed for high-speed @Source integration.

Highly versatile, suitable for any product type.

Better detection with XP version.

Frequency:

8.2 ± 5% MHz

Dimensions:

40mm x 40mm (1.57" x 1.57")

Face sheet:

White Thermal Transfer Paper,
Black Thermal Transfer Paper,
White Thermal Transfer Paper
with Barcode Print, White Direct
Thermal Paper.





Grocery
& Food

Cosmetics

Pharmacy

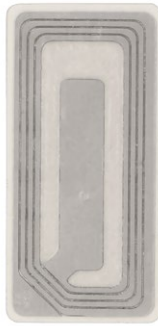
Eyewear,
jewelry &
accessories

General
Merchandise

Apparel
& Footwear

3110 XP

With theft of high-value, discreet items such as cosmetics and intimate apparel on the rise, customers are seeking new solutions to protect their products reliably and conveniently. Our 3110 RF label is ideal for protection small, thin cosmetics, especially blister-packaged products, offering enhanced protection without compromising aesthetics or convenience.



Frequency:
8.2 ± 5% MHz

Dimensions:
22x47 mm (0.87"x1.85")

Face sheet:
White Thermal Transfer Paper

BENEFITS

Designed to fit current blister packages for cosmetics.

Designed to protect small items.

Designed for high-speed @Source integration.

Promotes branding.

Improve on-shelf product availability.





Technical information



Grocery
& Food

Cosmetics

Pharmacy

Eyewear,
jewelry &
accessories

General
Merchandise

Apparel
& Footwear

2410

Type of label	Part Number	Description Name	Dimensions	Labels/roll	Rolls/box	APPLICATION METHOD				COLORS & DESIGN					TYPE OF ADHESIVE							PAPER OPTIONS				DEACTIVATION TYPE			CERTIFICATIONS				PRODUCT APPLICATION	MICRO FORMAT	Inactive en EMEA
						Auto Application	Hand Apply	HLS Tool Format	DROP IN	Dummy Bar Code	White	Clear Face	Black	Black Lock Logo	Yellow black lock logo	Printable	Removable adhesive	Standard adhesive	Indirect Food Contact	Direct Food Contact	Freezer Adhesive	Thermal Direct	Thermal Transfer	Paper Static Guard	Paper Two Sides	Non deactivatable	Deactivatable	Shoe Label Perforation	Microwave Certificate	Indirect Food Contact	Direct Food Contact	Packaging recyclability	Detection on metal	Micro Format	
2410	10152551	2410 XP CLR 4KR / 76	24mm x 25mm	4000	20000	●	●					●				●	●									●					●			●	
2410	10154161	2410 XP CLR 2K TRAY 25 / 85	24mm x 25mm	2000	20000		●					●				●	●									●					●			●	
2410	10154137	2410 XP WHT 1KR / 25	24mm x 25mm	1000	20000		●					●				●	●									●					●			●	●
2410	10152243	2410 XP CLR BL 2KR / 76	24mm x 25mm	2000	20000	●	●					●		●			●									●					●			●	
2410	10154140	2410 XP CLR BL 4KR / 76	24mm x 25mm	4000	20000	●						●		●			●									●					●			●	●
2410	10154132	2410 XP CLR BL 6KR / 76	24mm x 25mm	6000	24000	●						●		●			●									●					●			●	●
2410	10154069	2410 XP CLR LOCK ONLY 2KR / 76	24mm x 25mm	2000	20000	●	●					●		●			●									●					●			●	●
2410	10154070	2410 XP CLR LOCK ONLY 6KR / 76	24mm x 25mm	6000	24000	●						●		●			●									●					●			●	●
2410	10154139	2410 XP CLR FD 2K Tray / 25	24mm x 25mm	2000	20000		●					●					●									●					●			●	●
2410	10154068	2410 XP WHT 2KR / 76	24mm x 25mm	2000	20000	●	●				●					●	●						●			●					●			●	
2410	10154067	2410 XP WHT 4KR / 76	24mm x 25mm	4000	20000	●					●					●	●						●			●					●			●	
2410	10154063	2410 XP WHT 2K TRAY / 25	24mm x 25mm	2000	20000		●				●					●	●						●			●					●			●	
2410	10154064	2410 XP WHT DBC 2K TRAY / 25	24mm x 25mm	2000	20000		●			●	●						●						●			●					●			●	
2410	10154065	2410 XP WHT BL 2KR / 76	24mm x 25mm	2000	20000	●	●				●			●			●						●			●					●			●	●
2410	10154066	2410 XP WHT BL 6KR / 76	24mm x 25mm	6000	24000	●					●			●			●						●			●					●			●	●
2410	10154399	2410 XP WHT T-cut 14 rolls / 25	24mm x 25mm	250	3500		●	●			●					●	●						●			●					●			●	●
2410	10154395	2410 XP CLR FLAG TAG 4KR / 76	24mm x 25mm	4000	20000		●				●					●	●									●					●			●	●
2410 Microflex	10154396	2410 XP CLR BL MICROFLEX 0.5KR / 76	30mm x 104mm	500	20000		●					●		●			●									●					●			●	●



Grocery
& Food

Cosmetics

Pharmacy

Eyewear,
jewelry &
accessories

General
Merchandise

Apparel
& Footwear

2815

2815

Type of label	Part Number	Description Name	Dimensions	Labels/roll	Rolls/box	APPLICATION METHOD				COLORS & DESIGN					TYPE OF ADHESIVE					PAPER OPTIONS				DEACTIVATION TYPE			CERTIFICATIONS				PRODUCT APPLICATION	MICRO FORMAT	
						Auto Application	Hand Apply	HLS Tool Format	DROP IN	Dummy Bar Code	White	Clear Face	Black	Black Lock Logo	Yellow black lock logo	Printable	Removable adhesive	Standard adhesive	Indirect Food Contact	Direct Food Contact	Freezer Adhesive	Thermal Direct	Thermal Transfer	Paper Static Guard	Paper Two Sides	Non deactivatable	Deactivatable	Shoe Label Perforation	Microwave Certificate	Indirect Food Contact	Direct Food Contact	Packaging recyclability	Detection on metal
2815	10155610	2815 XP WHT P2S 4KR / 76	49mm x 27mm	4000	20000	●					●					●			●		●		●										●
2815	10155634	2815 XP WHT 2KR / 76	49mm x 27mm	2000	20000	●	●				●					●			●			●								●			
2815	10155632	2815 XP WHT 8KR / 152	49mm x 27mm	8000	24000	●					●					●			●			●								●			
2815	10155633	2815 XP WHT 4KR / 76	49mm x 27mm	4000	20000	●					●					●			●			●								●			
2815	10155608	2815 XP WHT 2KR / 76	49mm x 27mm	2000	20000	●	●				●					●		●				●								●			
2815	10155609	2815 XP WHT Shoe 2KR / 76	49mm x 27mm	2000	20000		●				●						●					●		●						●			
2815	10155631	2815 XP WHT SHOE 0.5KR / 25	49mm x 27mm	500	20000		●				●						●					●		●						●			



Grocery
& Food

Cosmetics

Pharmacy

Eyewear,
jewelry &
accessories

General
Merchandise

Apparel
& Footwear

2928

2928

Type of label	Part Number	Description Name	Dimensions	Labels/roll	Rolls/box	APPLICATION METHOD				COLORS & DESIGN						TYPE OF ADHESIVE					PAPER OPTIONS				DEACTIVATION TYPE			CERTIFICATIONS			PRODUCT APPLICATION	MICRO FORMAT	Inactive en EMEA
						Auto Application	Hand Apply	HLS Tool Format	DROP IN	Dummy Bar Code	White	Clear Face	Black	Black Lock Logo	Yellow black lock logo	Printable	Removable adhesive	Standard adhesive	Indirect Food Contact	Direct Food Contact	Freezer Adhesive	Thermal Direct	Thermal Transfer	Paper Static Guard	Paper Two Sides	Non deactivatable	Deactivatable	Shoe Label Perforation	Microwave Certificate	Indirect Food Contact	Direct Food Contact	Packaging recyclability	
2928 Microflex	10139638	2928 EP CLR BL Microflex 0.5KR / 76	30mm x 104mm	500	12000		●					●		●									●						●			●	
2928 Shield Tag	10151095	2928 XP CLR BL Shield tag 0.5KR / 76	50mm round	500	8000		●					●		●									●						●			●	
2928 Super Flag Tag	10154575	2928 XP CLR Super Flag Tag 0.5KR / 76	60mm x 32mm	500	10000		●					●		●									●						●			●	
2928	10147941	2928 XP CLR BL 2KR / 76	28mm round	2000	20000	●	●					●		●									●						●			●	
2928	10148866	2928 XP CLR 2KR / 76	28mm round	2000	20000	●	●					●			●								●						●			●	
2928	10148867	2928 XP CLR 4KR / 76	28mm round	4000	20000	●						●			●								●						●			●	
2928	10153695	2928 XP CLR BL UNWIND3 6KR / 76	28mm round	6000	24000	●						●		●									●						●			●	
2928	10153950	2928 XP CLR BL UNWIND 2 6KR / 76	28mm round	6000	24000	●						●		●									●						●			●	
2928	10154061	2928 XP CLR BL 10KR / 76	28mm round	1000	20000	●						●		●									●						●			●	●
2928	10153694	2928 XP CLR BL 0.5KR / 25	28mm round	500	20000		●					●		●									●						●			●	●
2928	10153697	2928 XP CLR Lock Only 2KR / 76	28mm round	2000	20000	●	●							●									●						●			●	●



Grocery
& Food

Cosmetics

Pharmacy

Eyewear,
jewelry &
accessories

General
Merchandise

Apparel
& Footwear

2933

2933

Type of label	Part Number	Description Name	Dimensions	Labels/roll	Rolls/box	APPLICATION METHOD				COLORS & DESIGN					TYPE OF ADHESIVE					PAPER OPTIONS				DEACTIVATION TYPE			CERTIFICATIONS			PRODUCT APPLICATION	MICRO FORMAT	Inactive en EMEA	
						Auto Application	Hand Apply	HLS Tool Format	DROP IN	Dummy Bar Code	White	Clear Face	Black	Black Lock Logo	Yellow black lock logo	Printable	Removable adhesive	Standard adhesive	Indirect Food Contact	Direct Food Contact	Freezer Adhesive	Thermal Direct	Thermal Transfer	Paper Static Guard	Paper Two Sides	Non deactivatable	Deactivatable	Shoe Label Perforation	Microwave Certificate	Indirect Food Contact	Direct Food Contact		Packaging recyclability
2933	10155067	2933 XP WHT 2KR / 76	33mm round	2000	20000	●	●				●				●	●						●							●				
2933	10155068	2933 XP CLR 2KR / 76	33mm round	2000	20000	●	●					●				●	●						●							●			
2933	10155194	2933 XP CLR BL 2KR / 76	33mm round	2000	20000	●	●					●				●	●						●							●			
2933	10155193	2933 XP CLR BL FR/ENG 2KR / 76	33mm round	2000	20000	●	●					●				●	●						●							●			●
2933	10155192	2933 XP CLR 4KR / 76	33mm round	4000	20000	●						●				●	●						●							●			
2933	10155191	2933 XP CLR BL,ROTA90 4KR / 76	33mm round	4000	20000	●						●				●	●						●							●			
2933	10155190	2933 XP CLR BL 4KR / 76	33mm round	4000	20000	●						●				●	●						●							●			●
2933	10155189	2933 XP YBL t-cut 0.2KR / 25	33mm round	200	2000		●	●								●	●						●							●			
2933	10155607	2933 XP CLR BL T-cut 0.25KR / 25	33mm round	250	2500		●	●				●				●	●						●							●			



Grocery
& Food

Cosmetics

Pharmacy

Eyewear,
jewelry &
accessories

General
Merchandise

Apparel
& Footwear

3110

3110						APPLICATION METHOD				COLORS & DESIGN					TYPE OF ADHESIVE				PAPER OPTIONS				DEACTIVATION TYPE			CERTIFICATIONS			PRODUCT APPLICATION	MICRO FORMAT	Inactive en EMEA	
						Auto Application	Hand Apply	HLS Tool Format	DROP IN	Dummy Bar Code	White	Clear Face	Black	Black Lock Logo	Yellow black lock logo	Printable	Removable adhesive	Standard adhesive	Indirect Food Contact	Direct Food Contact	Freezer Adhesive	Thermal Direct	Thermal Transfer	Paper Static Guard	Paper Two Sides	Non deactivatable	Deactivatable	Shoe Label Perforation	Microwave Certificate	Indirect Food Contact		Direct Food Contact
Type of label	Part Number	Description Name	Dimensions	Labels/roll	Rolls/box	<div></div>					<div></div>					<div></div>		<div></div>				<div></div>						<div></div>				
3110	10075188	3110 XP WHT 2KR / 76	22mm x 47mm	2000	20000	<div></div>					<div></div>					<div></div>		<div></div>				<div></div>						<div></div>				
3110	10075189	3110 XP WHT 4KR / 76	22mm x 47mm	4000	20000	<div></div>	<div></div>				<div></div>					<div></div>		<div></div>				<div></div>						<div></div>				

3210

3210	10155760	3210 XP CLR 2K Tray 0.5KR / 76	19mm x 65mm	500	20000		●					●				●	●									●					●				
3210	10155781	3210 XP CLR 2KR / 76	19mm x 65mm	2000	20000	●	●					●				●	●									●					●				

3610

3610	10154162	3610 XP WHT P2S 2KR / 76	15mm 52mm	2000	20000	●	●				●					●	●					●				●									●

3710

3710																																																																																																																																																																																																																																																																																																																																																																																																																																																																																																																																																																																																																																																																																																																																																																																																																																																																																																																																																																																																																																																																																																																																																																																																																																																																																																																																																																																																																									</
------	--	--	--	--	--	--	--	--	--	--	--	--	--	--	--	--	--	--	--	--	--	--	--	--	--	--	--	--	--	--	--	--	--	--	--	--	--	--	--	--	--	--	--	--	--	--	--	--	--	--	--	--	--	--	--	--	--	--	--	--	--	--	--	--	--	--	--	--	--	--	--	--	--	--	--	--	--	--	--	--	--	--	--	--	--	--	--	--	--	--	--	--	--	--	--	--	--	--	--	--	--	--	--	--	--	--	--	--	--	--	--	--	--	--	--	--	--	--	--	--	--	--	--	--	--	--	--	--	--	--	--	--	--	--	--	--	--	--	--	--	--	--	--	--	--	--	--	--	--	--	--	--	--	--	--	--	--	--	--	--	--	--	--	--	--	--	--	--	--	--	--	--	--	--	--	--	--	--	--	--	--	--	--	--	--	--	--	--	--	--	--	--	--	--	--	--	--	--	--	--	--	--	--	--	--	--	--	--	--	--	--	--	--	--	--	--	--	--	--	--	--	--	--	--	--	--	--	--	--	--	--	--	--	--	--	--	--	--	--	--	--	--	--	--	--	--	--	--	--	--	--	--	--	--	--	--	--	--	--	--	--	--	--	--	--	--	--	--	--	--	--	--	--	--	--	--	--	--	--	--	--	--	--	--	--	--	--	--	--	--	--	--	--	--	--	--	--	--	--	--	--	--	--	--	--	--	--	--	--	--	--	--	--	--	--	--	--	--	--	--	--	--	--	--	--	--	--	--	--	--	--	--	--	--	--	--	--	--	--	--	--	--	--	--	--	--	--	--	--	--	--	--	--	--	--	--	--	--	--	--	--	--	--	--	--	--	--	--	--	--	--	--	--	--	--	--	--	--	--	--	--	--	--	--	--	--	--	--	--	--	--	--	--	--	--	--	--	--	--	--	--	--	--	--	--	--	--	--	--	--	--	--	--	--	--	--	--	--	--	--	--	--	--	--	--	--	--	--	--	--	--	--	--	--	--	--	--	--	--	--	--	--	--	--	--	--	--	--	--	--	--	--	--	--	--	--	--	--	--	--	--	--	--	--	--	--	--	--	--	--	--	--	--	--	--	--	--	--	--	--	--	--	--	--	--	--	--	--	--	--	--	--	--	--	--	--	--	--	--	--	--	--	--	--	--	--	--	--	--	--	--	--	--	--	--	--	--	--	--	--	--	--	--	--	--	--	--	--	--	--	--	--	--	--	--	--	--	--	--	--	--	--	--	--	--	--	--	--	--	--	--	--	--	--	--	--	--	--	--	--	--	--	--	--	--	--	--	--	--	--	--	--	--	--	--	--	--	--	--	--	--	--	--	--	--	--	--	--	--	--	--	--	--	--	--	--	--	--	--	--	--	--	--	--	--	--	--	--	--	--	--	--	--	--	--	--	--	--	--	--	--	--	--	--	--	--	--	--	--	--	--	--	--	--	--	--	--	--	--	--	--	--	--	--	--	--	--	--	--	--	--	--	--	--	--	--	--	--	--	--	--	--	--	--	--	--	--	--	--	--	--	--	--	--	--	--	--	--	--	--	--	--	--	--	--	--	--	--	--	--	--	--	--	--	--	--	--	--	--	--	--	--	--	--	--	--	--	--	--	--	--	--	--	--	--	--	--	--	--	--	--	--	--	--	--	--	--	--	--	--	--	--	--	--	--	--	--	--	--	--	--	--	--	--	--	--	--	--	--	--	--	--	--	--	--	--	--	--	--	--	--	--	--	--	--	--	--	--	--	--	--	--	--	--	--	--	--	--	--	--	--	--	--	--	--	--	--	--	--	--	--	--	--	--	--	--	--	--	--	--	--	--	--	--	--	--	--	--	--	--	--	--	--	--	--	--	--	--	--	--	--	--	--	--	--	--	--	--	--	--	--	--	--	--	--	--	--	--	--	--	--	--	--	--	--	--	--	--	--	--	--	--	--	--	--	--	--	--	--	--	--	--	--	--	--	--	--	--	--	--	--	--	--	--	--	--	--	--	--	--	--	--	--	--	--	--	--	--	--	--	--	--	--	--	--	--	--	--	--	--	--	--	--	--	--	--	--	--	--	--	--	--	--	--	--	--	--	--	--	--	--	--	--	--	--	--	--	--	--	--	--	--	--	--	--	--	--	--	--	--	--	--	--	--	--	--	--	--	--	--	--	--	--	--	--	--	--	--	--	--	--	--	--	--	--	--	--	--	--	--	--	--	--	--	--	--	--	--	--	--	--	--	--	--	--	--	--	--	--	--	--	--	--	--	--	--	--	--	--	--	--	--	--	--	--	--	--	--	--	--	--	--	--	--	--	--	--	--	--	--	--	--	--	--	--	--	--	--	--	--	--	--	--	--	--	--	--	--	--	--	--	--	--	--	--	--	--	--	--	--	--	--	--	--	--	--	--	--	--	--	--	--	--	--	--	--	--	--	--	--	--	--	--	--	--	--	--	--	--	--	--	--	--	--	--	--	--	--	--	--	--	--	--	--	--	--	--	--	--	--	--	--	--	--	--	--	--	--	--	--	--	--	--	--	--	--	--	--	--	--	--	--	--	--	--	--	--	--	--	--	--	--	--	--	--	--	--	--	--	--	--	--	--	--	--	--	--	--	--	--	--	--	--	--	--	--	--	--	--	--	--	--	--	--	--	--	--	--	--	--	--	--	--	--	--	--	--	--	--	--	--	--	--	--	--	--	--	--	--	--	--	--	--	--	--	--	--	--	--	--	--	--	--	--	--	--	--	--	--	--	--	--	--	--	--	--	--	--	--	--	--	--	--	--	--	--	--	--	--	--	--	--	--	--	--	--	--	--	--	--	--	--	--	--	--	--	--	--	--	--	--	--	--	--	--	--	--	--	--	--	--	--	--	--	--	--	--	--	--	--	--	--	--	--	--	--	--	--	--	--	--	--	--	--	--	--	--	--	--	--	--	--	--	--	--	--	--	--	--	--	--	--	--	--	--	--	--	--	--	--	--	--	--	--	--	--	--	--	--	--	--	--	--	--	--	--	--	--	--	--	--	--	--	--	--	--	--	--	--	--	--	--	--	--	--	--	--	--	--	--	--	--	--	--	--	--	--	--	--	--	--	--	--	--	--	--	--	--	----



Grocery
& Food

Cosmetics

Pharmacy

Eyewear,
jewelry &
accessories

General
Merchandise

Apparel
& Footwear

3740

3740

Type of label	Part Number	Description Name	Dimensions	Labels/roll	Rolls/box	APPLICATION METHOD				COLORS & DESIGN						TYPE OF ADHESIVE						PAPER OPTIONS				DEACTIVATION TYPE			CERTIFICATIONS				PRODUCT APPLICATION	MICRO FORMAT	Inactive en EMEA
						Auto Application	Hand Apply	HLS Tool Format	DROP IN	Dummy Bar Code	White	Clear Face	Black	Black Lock Logo	Yellow black lock logo	Printable	Removable adhesive	Standard adhesive	Indirect Food Contact	Direct Food Contact	Freezer Adhesive	Thermal Direct	Thermal Transfer	Paper Static Guard	Paper Two Sides	Non deactivatable	Deactivatable	Shoe Label Perforation	Microwave Certificate	Indirect Food Contact	Direct Food Contact	Packaging recyclability	Detection on metal	Micro Format	
3740	10151091	3740 XP CLR 8KR / 76	37mm x 40mm	8000	24000	●						●											●		●	●		●							
3740	10151092	3740 XP CLR 4KR / 76	37mm x 40mm	4000	20000	●						●											●		●	●		●							
3740	10153349	3740 XP WHT 2KR / 76	37mm x 40mm	2000	20000	●	●				●							●			●			●		●	●		●					●	
3740	10151146	3740 XP YBL 1KR / 76	37mm x 40mm	1000	20000		●							●				●						●		●	●		●						
3740	10153362	3740 XP WHT DIRECT CONTACT 2KR / 76	37mm x 40mm	2000	20000	●	●				●										●			●		●		●		●					
3740	10153329	3740 XP CLR BL 2KR / 76	37mm x 40mm	2000	20000	●	●					●		●					●					●		●	●		●						
3740	10153328	3740 XP CLR Freezer 2KR / 76	37mm x 40mm	2000	20000	●	●					●		●					●	●				●		●	●		●						
3740	10153350	3740 XP YBL DEUTSCH 1KR / 76	37mm x 40mm	1000	20000	●	●							●					●					●		●	●		●						
3740	10153361	3740 XP CLR BL FREEZER 8KR / 76	37mm x 40mm	8000	24000	●						●		●					●	●				●		●	●		●						●
3740	10153330	3740 XP CLR BL 6KR / 76	37mm x 40mm	6000	24000	●						●		●					●					●		●	●		●						●
3740	10153341	3740 XP YBL Rotate 4A 2KR / 76	37mm x 40mm	2000	20000	●									●				●					●		●	●		●						●
3740	10153342	3740 XP YBL Rotate 4B 2KR / 76	37mm x 40mm	2000	20000	●									●				●					●		●	●		●						●
3740	10153327	3740 XP YBL Freezer 8KR / 76	37mm x 40mm	8000	24000	●									●				●	●				●		●	●		●						●
3740	10153343	3740 XP YBL FREEZER 2KR / 76	37mm x 40mm	2000	20000	●									●				●	●				●		●	●		●						●
3740	10153344	3740 XP WHT DBC 2KR / 76	37mm x 40mm	2000	20000	●	●			●	●								●			●			●		●	●		●					



Grocery
& Food

Cosmetics

Pharmacy

Eyewear,
jewelry &
accessories

General
Merchandise

Apparel
& Footwear

3810

3810

Type of label	Part Number	Description Name	Dimensions	Labels/roll	Rolls/box	APPLICATION METHOD				COLORS & DESIGN					TYPE OF ADHESIVE					PAPER OPTIONS				DEACTIVATION TYPE			CERTIFICATIONS			PRODUCT APPLICATION	MICRO FORMAT	Inactive en EMEA	
						Auto Application	Hand Apply	HLS Tool Format	DROP IN	Dummy Bar Code	White	Clear Face	Black	Black Lock Logo	Yellow black lock logo	Printable	Removable adhesive	Standard adhesive	Indirect Food Contact	Direct Food Contact	Freezer Adhesive	Thermal Direct	Thermal Transfer	Paper Static Guard	Paper Two Sides	Non deactivatable	Deactivatable	Shoe Label Perforation	Microwave Certificate	Indirect Food Contact	Direct Food Contact		Packaging recyclability
3810	10153369	3810 XP WHT 6KR / 76	31mm x 32mm	6000	24000	●					●				●		●						●					●					●
3810	10152331	3810 XP WHT 8KR / 76	31mm x 32mm	8000	24000	●					●				●		●						●					●					
3810	10152540	3810 XP WHT 2KR / 76	31mm x 32mm	2000	20000	●	●				●				●		●						●					●					●
3810	10154203	3810 XP WHT 1KR / 76	31mm x 32mm	1000	20000		●				●				●		●						●					●					
3810	10154206	3810 XP WHT DBC 1KR / 76	31mm x 32mm	1000	20000		●			●	●						●						●					●					
3810	10154208	3810 XP WHT RD 2KR 76/	31mm x 32mm	2000	20000	●	●				●				●		●						●					●					●
3810	10154210	3810 XP WHT 4KR / 76	31mm x 32mm	4000	20000	●					●				●		●						●					●					
3810	10154211	3810 XP WHT BL Unwind 4 6KR 76/	31mm x 32mm	6000	24000	●					●			●			●						●					●					●
3810	10154212	3810 XP WHT 8KR 152/	31mm x 32mm	8000	24000	●					●				●		●						●					●					●
3810	10154213	3810 XP WHT BL UNWIND 4 8KR / 76	31mm x 32mm	8000	24000	●					●			●			●						●					●					●
3810	10154218	3810 XP CLR BL 2KR / 76	31mm x 32mm	2000	20000	●	●					●		●			●											●					
3810	10154219	3810 XP CLR LOCK ONLY 2KR / 76	31mm x 32mm	2000	20000	●	●					●		●			●											●					
3810	10154220	3810 XP CLR LOCK ONLY 2KR / 76	31mm x 32mm	4000	20000	●	●					●		●			●											●					●
3810	10154221	3810 XP CLR BL 4KR / 76	31mm x 32mm	4000	20000	●						●		●			●											●					●
3810	10154222	3810 XP CLR BL 8KR / 76	31mm x 32mm	8000	24000	●						●				●	●											●					●
3810	10154223	3810 XP CLR BL 8KR / 76	31mm x 32mm	8000	24000	●						●		●			●											●					●
3810	10154224	3810 XP CLR LOCK ONLY 8KR / 76	31mm x 32mm	8000	24000	●	●					●		●			●											●					●



Grocery
& Food

Cosmetics

Pharmacy

Eyewear,
jewelry &
accessories

General
Merchandise

Apparel
& Footwear

40R

Type of label	Part Number	Description Name	Dimensions	Labels/roll	Rolls/box
---------------	-------------	------------------	------------	-------------	-----------

40R	1011896	40R ECON YBL 1KR / 76	40mm round	1000	20000
40R	9501530	40R ECON Yellow 1KR / 76	40mm round	1000	20000

410

410 SP AA	10149059	410 SP WHT DROPIN 5K Carton	40mm x 40mm	5000	30000
410 SP AA	7288101	410 SP Wht 4KR / 76	40mm x 40mm	4000	20000
410 SP AA	7365717	410 SP WHT 4KR / 102	40mm x 40mm	4000	20000
410 SP AA	7410149	410 SP Wht 8KR / 76	40mm x 40mm	8000	24000
410 SP AA	7673084	410 SP Wht 2K try 40/110	40mm x 40mm	500	20000
410 ECON	1011887	410 ECON WHT 1KR / 76	40mm x 40mm	1000	20000
410 ECON	1011888	410 ECON WHT DBC 1KR / 76	40mm x 40mm	1000	20000
410 ECON	1011899	410 ECON WHT TD 1KR / 76	40mm x 40mm	1000	20000
410 ECON	1011904	410 ECON BLK 1KR / 76	40mm x 40mm	1000	20000
410 ECON	10112019	410 ECON WHT 2KR / 76	40mm x 40mm	2000	20000
410 ECON	10112475	410 ECON WHT DBC 2KR / 76	40mm x 40mm	2000	20000

APPLICATION METHOD				COLORS & DESIGN							TYPE OF ADHESIVE					PAPER OPTIONS				DEACTIVATION TYPE			CERTIFICATIONS					PRODUCT APPLICATION	MICRO FORMAT
Auto Application	Hand Apply	HLS Tool Format	DROP IN	Dummy Bar Code	White	Clear Face	Black	Black Lock Logo	Yellow black lock logo	Printable	Removable adhesive	Standard adhesive	Indirect Food Contact	Direct Food Contact	Freezer Adhesive	Thermal Direct	Thermal Transfer	Paper Static Guard	Paper Two Sides	Non deactivatable	Deactivatable	Shoe Label Perforation	Microwave Certificate	Indirect Food Contact	Direct Food Contact	Packaging recyclability	Detection on metal	Micro Format	
	●								●			●									●					●			
			●						●			●									●					●			
					●					●		●					●				●					●			
●					●					●		●					●				●					●			
●					●					●		●					●				●					●			
●					●					●		●					●				●					●			
	●				●					●		●					●				●					●			
	●				●					●		●					●				●					●			
	●			●	●							●					●				●					●			
	●				●					●		●				●					●					●			
	●						●					●									●					●			
	●				●					●		●					●				●					●			
	●			●	●							●					●				●					●			



Grocery
& Food

Cosmetics

Pharmacy

Eyewear,
jewelry &
accessories

General
Merchandise

Apparel
& Footwear

410

410

Type of label	Part Number	Description Name	Dimensions	Labels/roll	Rolls/box	APPLICATION METHOD				COLORS & DESIGN						TYPE OF ADHESIVE						PAPER OPTIONS				DEACTIVATION TYPE			CERTIFICATIONS				PRODUCT APPLICATION	MICRO FORMAT	Inactive en EMEA
						Auto Application	Hand Apply	HLS Tool Format	DROP IN	Dummy Bar Code	White	Clear Face	Black	Black Lock Logo	Yellow black lock logo	Printable	Removable adhesive	Standard adhesive	Indirect Food Contact	Direct Food Contact	Freezer Adhesive	Thermal Direct	Thermal Transfer	Paper Static Guard	Paper Two Sides	Non deactivatable	Deactivatable	Shoe Label Perforation	Microwave Certificate	Indirect Food Contact	Direct Food Contact	Packaging recyclability	Detection on metal		
410 ECON	10147821	410 ECON SeC Wrap 50x300 0.5KR / 76	40mm x 40mm	500	6000		●										●					●						●							
410 ECON	10148031	410 ECON WHT BL 1KR / 76	40mm x 40mm	1000	20000		●						●				●					●						●							
410 ECON	10148092	410 ECON WHT 2UP 2x2K 4KR / 76	40mm x 40mm	4000	20000	●									●		●					●						●						●	
410 SP HA	10143711	410 SP WHT Continuous drop in 2KR / 76	40mm x 40mm	2000	20000				●			●			●							●						●							
410 SP HA	7150318	410 SP HA DBC 2K Tray / 38	40mm x 40mm	500	20000		●			●	●						●					●						●							
410 SP HA	7167168	410 SP HA Wht REM 2KR / 102	40mm x 40mm	2000	20000	●					●				●	●						●						●							
410 SP HA	7214751	410 SP Wht 2K Try / 25	40mm x 40mm	500	20000		●				●				●		●					●						●							
410 SP HA	7283986	410 SP Blk 2K Try / 38	40mm x 40mm	500	20000		●						●				●						●					●							
410 SP HA	7551246	410 SP Wht 2KR / 76	40mm x 40mm	2000	20000	●	●				●				●		●					●						●							
410 SP HA	7909949	410 SP Wht DBC 2KR / 76	40mm x 40mm	2000	20000	●	●			●	●						●					●						●							
410 XP	10152137	410 XP WHT 2KR / 76	40mm x 40mm	2000	20000	●	●				●				●		●					●						●							
410 XP	10151418	410 XP WHT 4KR / 76	40mm x 40mm	4000	20000	●					●				●		●					●						●							
410 XP	10152203	410 XP WHT 8KR / 152	40mm x 40mm	8000	24000	●					●				●		●					●						●							



Grocery
& Food

Cosmetics

Pharmacy

Eyewear,
jewelry &
accessories

General
Merchandise

Apparel
& Footwear

815

Type of label	Part Number	Description Name	Dimensions	Labels/roll	Rolls/box
815 Shoe	10121894	815 EP Shoe Red Dot Rem 2KR / 76	46mm x 31mm	2000	20000

APPLICATION METHOD				COLORS & DESIGN							TYPE OF ADHESIVE					PAPER OPTIONS				DEACTIVATION TYPE			CERTIFICATIONS				PRODUCT APPLICATION	MICRO FORMAT
Auto Application	Hand Apply	HLS Tool Format	DROP IN	Dummy Bar Code	White	Clear Face	Black	Black Lock Logo	Yellow black lock logo	Printable	Removable adhesive	Standard adhesive	Indirect Food Contact	Direct Food Contact	Freezer Adhesive	Thermal Direct	Thermal Transfer	Paper Static Guard	Paper Two Sides	Non deactivatable	Deactivatable	Shoe Label Perforation	Microwave Certificate	Indirect Food Contact	Direct Food Contact	Packaging recyclability	Detection on metal	Micro Format
	●				●						●						●				●	●						
4115 RF Metal	10156136	4115 RF METAL CMC TT BL 0.5KR /76	41mm x 15mm	500	10000			●			●						●				●						●	●
2933 Box Seal	10155188	2933 XP CLR BL BOX SEAL 40X200 500/76	40mm x 200mm	500	6000		●	●		●	●										●							



Grocery
& Food

Cosmetics

Pharmacy

Eyewear,
jewelry &
accessories

General
Merchandise

Apparel
& Footwear

710

710

Type of label	Part Number	Description Name	Dimensions	Labels/roll	Rolls/box	APPLICATION METHOD				COLORS & DESIGN						TYPE OF ADHESIVE						PAPER OPTIONS				DEACTIVATION TYPE			CERTIFICATIONS			PRODUCT APPLICATION	MICRO FORMAT	Inactive en EMEA
						Auto Application	Hand Apply	HLS Tool Format	DROP IN	Dummy Bar Code	White	Clear Face	Black	Black Lock Logo	Yellow black lock logo	Printable	Removable adhesive	Standard adhesive	Indirect Food Contact	Direct Food Contact	Freezer Adhesive	Thermal Direct	Thermal Transfer	Paper Static Guard	Paper Two Sides	Non deactivatable	Deactivatable	Shoe Label Perforation	Microwave Certificate	Indirect Food Contact	Direct Food Contact	Packaging recyclability	Detection on metal	
710 XP	10075096	710 XP WHT 8KR / 152	35mm x 41mm	8000	24000	●					●				●	●						●						●						
710 XP	10075095	710 XP WHT 0.5 KR / 76	35mm x 41mm	500	20000		●				●				●	●						●						●						●
710 XP	10075059	710 XP WHT P2S 4KR / 76	35mm x 41mm	4000	20000	●					●				●	●						●						●						
710 XP	10075104	710 XP WHT 10KR / 152	35mm x 41mm	10000	20000	●					●				●	●						●						●						●
710 XP	10075056	710 XP WHT 2KR / 76	35mm x 41mm	2000	20000	●	●				●				●	●						●						●						
710 XP	10075098	710 XP WHT 4KR / 76	35mm x 41mm	4000	20000	●					●				●	●						●						●						
710 XP	10075100	710 XP WHT DBC 4KR / 76	35mm x 41mm	4000	20000	●				●	●				●		●					●						●						
710 XP	10075097	710 XP WHT 6KR / 76	35mm x 41mm	6000	24000	●					●				●	●						●						●						
710 XP	10075216	710 XP CLR 12KR / 76	35mm x 41mm	12000	24000	●						●			●		●										●					●		
710 XP	10075219	710 XP CLR 8KR / 76	35mm x 41mm	8000	24000	●						●			●		●										●					●		
710 XP	10075217	710 XP CLR 4KR / 76	35mm x 41mm	4000	20000	●						●			●		●										●					●		
710 XP	10075215	710 XP CLR 2KR / 76	35mm x 41mm	2000	20000	●	●					●			●		●										●					●		
710 XP	10075214	710 XP CLR 12KR / 76	35mm x 41mm	12000	24000	●						●			●		●										●					●		



Terminology

Standardised description format:

Label type	Label Range	Top layer -Clear or Paper, Print, Speciality	Roll Quantity	Inner Core Diameter
2928	Xp	CLR DG Shield Tag	2KR /	76

CLR	Clear PET top layer
WHT	White TT paper top layer
TD	White Thermal Direct top layer
BLK	Black paper top layer
YBL	Yellow top layer with black lock print
DBC	Dummy barcode print
iQR	With customer specific QR code
BL	Black Lock logo security messaging
SHEET	AM labels in sheet format

SPT	Spotting / label insertion
TRAY	2K labels packed as 4 rolls on 25mm inner core
RD	Bad labels marked with red dot
REM	Removable adhesive
HLS	Designed to work with Meto HLS tools
P2S	2 sided paper format for pocket tags
ND	Non Deactivatable
Sleeve	Shrink Sleeve with integrated RF Label



checkpoint
systems.com